



NTI COMPASS

FLOOR STANDING BOILER | OIL CONVERSION

INSTALL-READY BY DESIGN

The NTI Compass Series are high-efficiency floor standing boilers, available in both combi & heat-only models, without the install-day surprises. So you can replace the boiler, not the room.

Choose the NTI Compass Series to achieve:

- Lower operating costs & high-efficiency
- A compact & clean installation
- Reliable hot water without an additional tank (combi models)
- Easier & more affordable long-term maintenance
- Field convertible to LP (kit included)

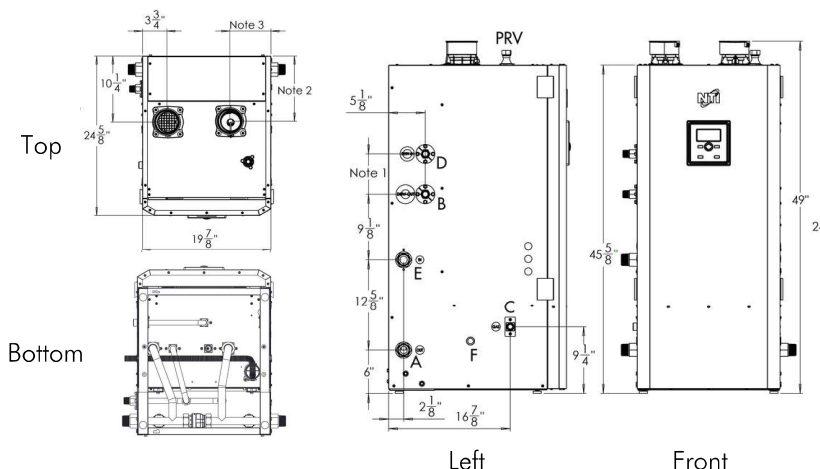
	NTI Compass Combi	Oil Boiler with Tank
Installation Cost	Lower	Higher
Equipment Size	Compact	Larger (typically)
Operating Cost	Lower (usually)	Higher (usually)
Hot Water Volume	On-Demand	On-demand less efficient
Efficiency	Up to 96%	80-85% (typical)
Maintenance	Simpler	More involved
Emissions	Lower	Higher



PRODUCT DIMENSIONS

A	Central Heating Supply
B	Supply to Indirect Water Heater; *DHW Out
C	Gas Inlet
D	Return from Indirect Water Heater; *DHW In
E	Central Heating Return
F	Condensate Drain
PRV	Pressure Relief Valve
NOTE 1	Combi = 8-3/4" System = 5-5/8"
NOTE 2	NC085-110 = 11" NC150-199 = 10-1/4"
NOTE 3	NC085-110 = 6" NC150-199 = 6-3/8"

*For Combi models



PRODUCT SPECIFICATIONS

MODEL			NC085	NC110	NC150	NC199	NC110C	NC150C	NC199C
Capacity	Input Rating CH ¹	MBH	8.5-85	11-110	15-150	19.9-199	11-110	15-150	19.9-199
	Input Rating DHW ¹								
	Heating Capacity ^{1 2}		79	101	138	184	101	138	184
	Net AHRI Rating, Water ²		69	88	120	160	88	120	160
	Modulation (turndown)	Ratio	10:1						
Performance	AFUE	%	96	95					
DHW Flow	35 ° F Rise	GPM	N/A				5.8	7.9	10.5
	45 ° F Rise						4.5	6.1	8.2
	77 ° F Rise						2.6	3.6	4.8
Venting Length ^{3 4}	2" Min-Max Exhaust	Ft	6-100						
	2" Min-Max Inlet		0-100						
	3" Min-Max Exhaust		6-150						
	3" Min-Max Inlet		0-150						
Volume	Water Content	Gal- lons	2.6		3.5	4.2	2.7	3.6	4.3
Weight	Approx "Full Boiler"	Lbs	176		192	209	178	195	212
	Shipping		193		203	214	194	204	215
Safety Devices		Flame Rectifier Probe, Temperature Limit Control (190 ° F), Water Pressure Switch (Min. 8 PSI), Freeze Protection, Condensate Trap, Flue Temperature High Limit Sensor (199 ° F)							

¹ Listed Input and Output Ratings are at minimum vent lengths at an altitude of 0-2000 ft. Numbers will be lower with longer venting and/or altitude greater than 2000 ft.

² Ratings based on standard test procedures prescribed by the US Department of Energy and certified to ANSI Z21.13/CSA 4.9

³ The NTI Compass requires a special venting system. Use only the vent materials and methods detailed in these installation instructions.

⁴ It is permissible to use SS Vent material, however, only PVC/CPVC/PP can be directly inserted into the applicable adapters.

100% CHECKED AND TESTED

Every single NTI product undergoes a rigorous internal process of automated quality, efficiency and safety tests before coming to you.



WWW.NTIBOILERS.COM