



GF150 High Efficiency Gas-Fired Combi Boiler / Space Heating Fan Coil

SUBMITTAL SHEET
Section 1 – General Specifications
Section 2 – Product Dimensions
Section 3 – Field Wiring

Project Name: _____ Date: _____
Location: _____
Engineer: _____
Contractor: _____ Rep: _____

1 – GENERAL SPECIFICATIONS

Product Features:

- ✓ Certified to ANSI Z21.13 / CSA 4.9 Gas-fired Boiler Standard CSA C22.2 No. 236 / UL 1995; Heating & Cooling Equipment.
- ✓ Copper tube / aluminum fin Space Heating Coil
- ✓ ASME “H” stamped boiler, designed and constructed in compliance with the ASME Boiler and Pressure Vessel Code Section IV
- ✓ Maximum operating pressure 55 psi (CH circuit)
- ✓ Maximum operating pressure 125 psi (DHW circuit)
- ✓ Zero clearance to combustibles (clearances required for service)
- ✓ Modulating burner, up to 11:1 turndown ratio
- ✓ Certified as Direct Vent (sealed combustion) or for use with indoor combustion air
- ✓ High energy ignition transformer (spark ignition)
- ✓ Built-in water pressure bypass (guarantees min. water flow)
- ✓ Low water pressure switch
- ✓ Integrated ECM boiler circulator
- ✓ Integrated 3-way valve for heating: Hydronic, Forced Air or both simultaneously
- ✓ Integrated condensate trap
- ✓ Left or right-hand side DHW, condensate & gas line piping configuration
- ✓ Left and right side 120 VAC convenience outlet
- ✓ Inputs: hydronic /2-stage forced air /2-stage cooling / ventilation
- ✓ Outdoor temperature sensor input
- ✓ Plenum temperature sensor input

Factory Supplied Items:

- ✓ 10K thermistor outdoor sensor
- ✓ ASME Pressure Relief Valve (PRV): 30 psi for hydronic and 125 psi for DHW
- ✓ Pressure & temperature gauge
- ✓ LP conversion kit
- ✓ Vent screens

Control Features:

- ✓ Embedded WiFi remote connectivity
- ✓ Integral microprocessor safety control – flame safeguard and temperature
- ✓ TEST Mode – for combustion setup
- ✓ PURGE cycle – for air purging
- ✓ AUTO function (outdoor reset) – resets boiler temperature depending on outdoor temperature
- ✓ Adjustable reset curve (slope/parallel shift)
- ✓ Adjustable reset temperature boost
- ✓ Summer/Winter changeover (WWSD)
- ✓ Freeze protection
- ✓ Factory settings restore option
- ✓ Adjustable post purge timer
- ✓ Adjustable ignition delay timer
- ✓ Manual mode operation (pump/fan/diverter)
- ✓ Boiler statistics
- ✓ Lockout and error history

DHW Features:

- ✓ Built-in DHW flow switch, w/ serviceable filter
- ✓ Built-in DHW stainless brazed plate heat exchanger
- ✓ Selectable DHW Preheat feature
- ✓ Up to 3.6 GPM (77°F rise)

HVAC Features:

- ✓ DEC Star ECM Blower auto adjusts to overcome static pressure to maintain CFM
- ✓ Shaftless blower system reduces airflow restrictions and improves efficiency
- ✓ A/C coil freeze protection
- ✓ Side, back or bottom return air options

HYD – Water Connection, NPT	DHW – Water Connection, NPT	Gas Connection, NPT	Vent/Air-Inlet Connection	Max. Vent/Air-Inlet		Weight
				2” pipe	3” pipe	
¾” (Male)	¾” (Male)	¾” (Male)	2 in. PVC/CPVC/PP	100 ft	150 ft	240 lbs



NTI Boilers Inc.

NTI Boilers Inc. 30 Stonegate Drive, Saint John, NB E2H 0A4 Canada

Technical Services: 1-800-688-2575 Fax: 1-506-432-1135 Web: [http:// www.ntiboilers.com](http://www.ntiboilers.com)

NTI Boilers Inc. reserves the right to change these specifications without notice



GF150 High Efficiency Gas-Fired Combi Boiler / Space Heating Fan Coil

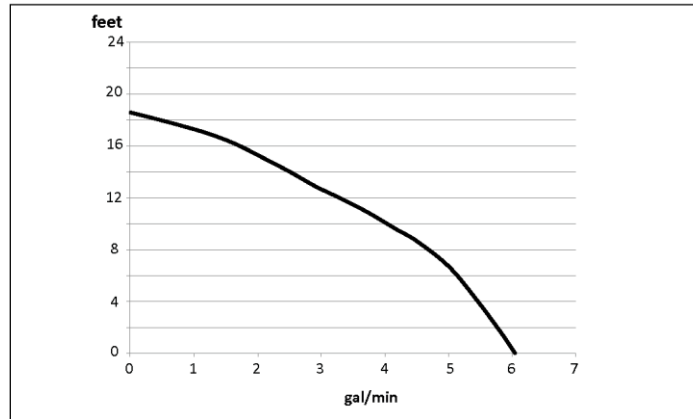
SUBMITTAL SHEET
 Section 1 – General Specifications
 Section 2 – Product Dimensions
 Section 3 – Field Wiring

Boiler Performance Specifications

Input Rating, MBH		Heating Output Capacity, MBH	Net AHRI Rating, MBH	AFUE %	Hot Water Capacity, GPM		
DHW	Heating				35°F Rise	45°F Rise	77°F Rise
13.2 – 150	13.2 – 120*	111	97	95	7.9	6.1	3.6

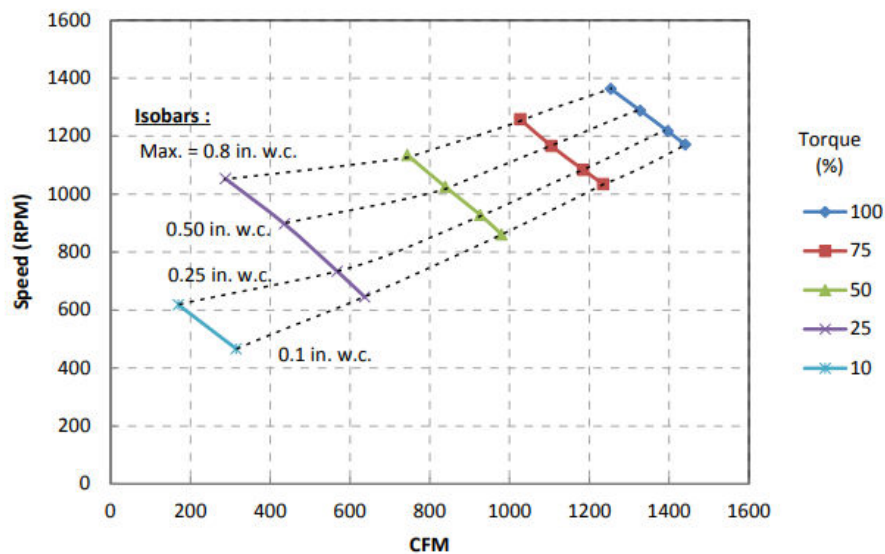
* Forced air limited to a maximum of 80 MBH

Graph Representing the Available Circulation Pump Head



Air Handler Performance Specifications

Heating	Cooling (1.5 – 3 ton)	Recirculation	Max External static pressure (ESP)
300 – 1200 CFM	360 – 1200 CFM	300 – 1200 CFM	0.8 in. w.c.



NTI Boilers Inc.

NTI Boilers Inc. 30 Stonegate Drive, Saint John, NB E2H 0A4 Canada
 Technical Services: 1-800-688-2575 Fax: 1-506-432-1135 Web: [http:// www.ntiboilers.com](http://www.ntiboilers.com)
 NTI Boilers Inc. reserves the right to change these specifications without notice



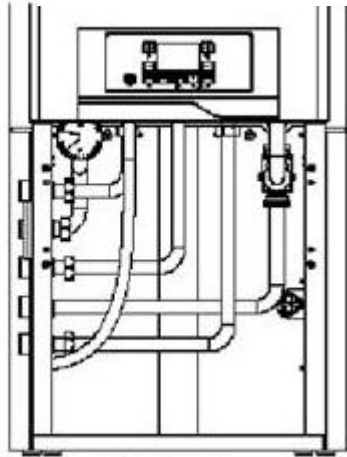
GF150 High Efficiency Gas-Fired Combi Boiler / Space Heating Fan Coil

SUBMITTAL SHEET
 Section 1 – General Specifications
 Section 2 – Product Dimensions
 Section 3 – Field Wiring

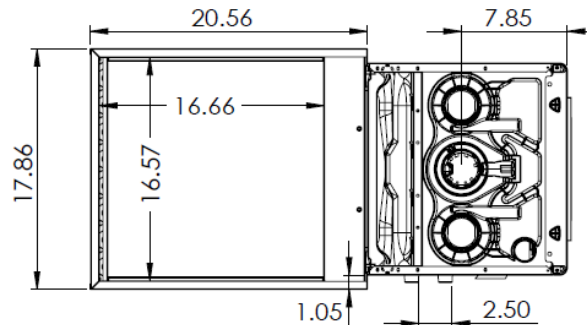
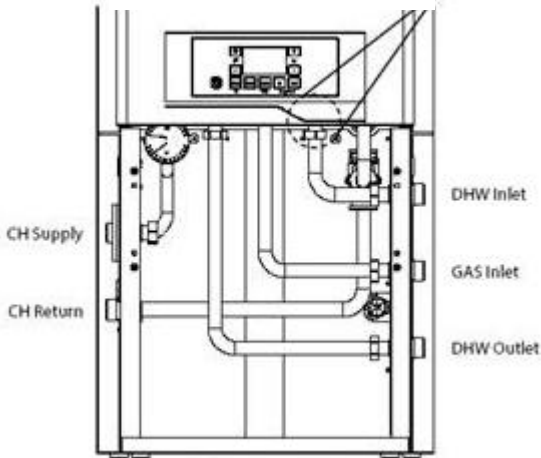
2 – PRODUCT DIMENSIONS - in.

* The DHW & gas may be installed on the left OR right side (panels are a mirror image).

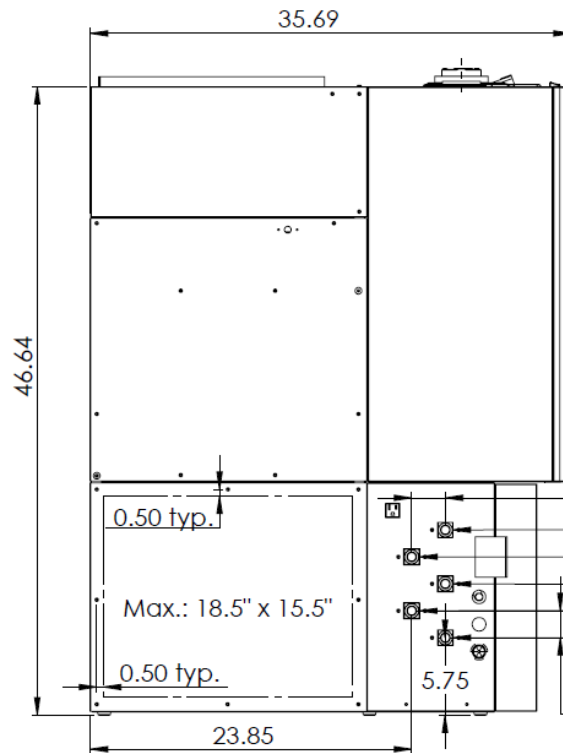
Left configuration



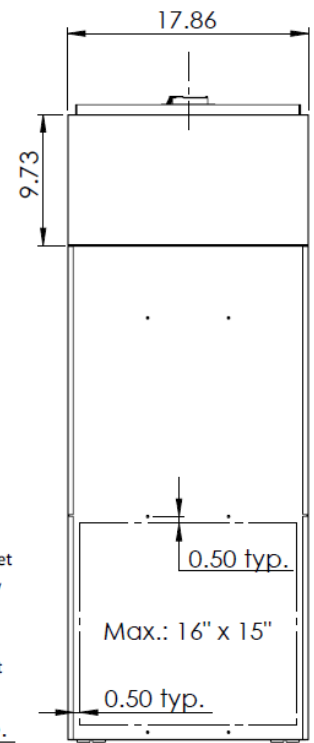
Right configuration



Top



Left Side



Back

MINIMUM CLEARANCES - in.

	Front	Top	Sides	Side (blower access)	Back	Bottom
To combustibles	0	9	0	0	0	0
For service	* 24	*as required	*as required	24	0	0

*No additional clearance required if the obstruction is moveable during service



NTI Boilers Inc.

NTI Boilers Inc. 30 Stonegate Drive, Saint John, NB E2H 0A4 Canada
 Technical Services: 1-800-688-2575 Fax: 1-506-432-1135 Web: [http:// www.ntiboilers.com](http://www.ntiboilers.com)
 NTI Boilers Inc. reserves the right to change these specifications without notice

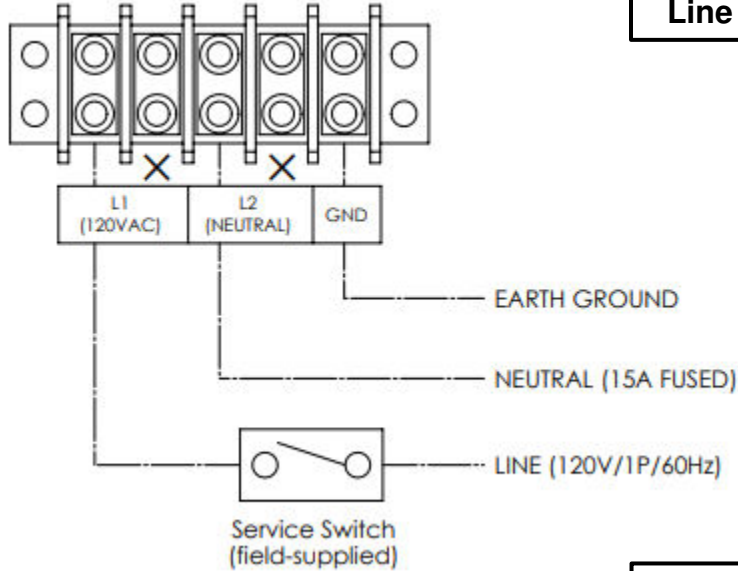


GF150 High Efficiency Gas-Fired Combi Boiler / Space Heating Fan Coil

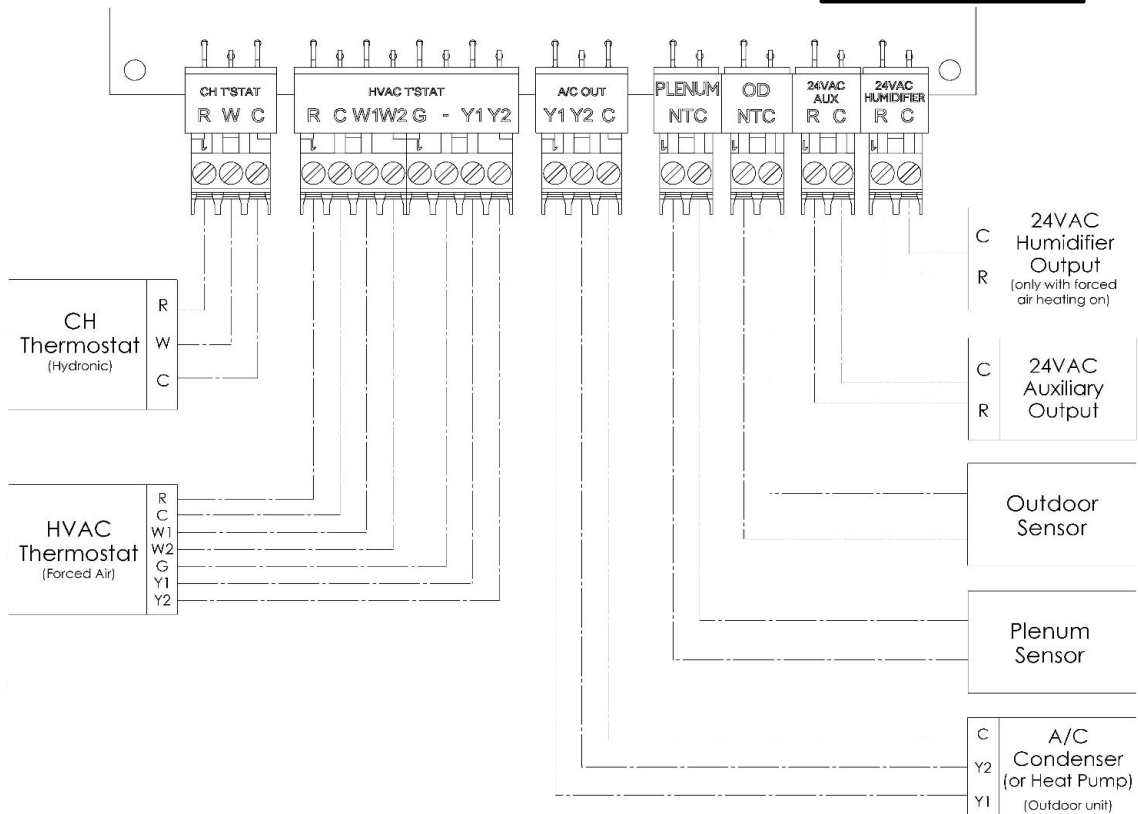
SUBMITTAL SHEET
 Section 1 – General Specifications
 Section 2 – Product Dimensions
 Section 3 – Field Wiring

Power Supply: 120V AC, 60 Hz

Line Voltage



Low Voltage



NTI Boilers Inc.

NTI Boilers Inc. 30 Stonegate Drive, Saint John, NB E2H 0A4 Canada

Technical Services: 1-800-688-2575 Fax: 1-506-432-1135 Web: [http:// www.ntiboilers.com](http://www.ntiboilers.com)

NTI Boilers Inc. reserves the right to change these specifications without notice