

# HIGH-OUTPUT COMBI SYSTEM



Products you need  
from people who care.



The perfect  
pairing of beauty  
and performance



**Versatile**  
6 sizes available

**Easy to Install**  
With quick-connect piping kit

**Peak Performance**  
Abundant hot water supply



## NOT ALL COMBIS ARE CREATED EQUAL

In recent years, combination boilers (Combis) that produce space heating and domestic hot water have become the norm. While traditional combi boilers offer tremendous advantages, there are few areas where the NTI High-Output Combi System has additional advantages.

**The Best of Both Worlds** – The NTI High-Output Combi System delivers all the advantages of a boiler and tank combination, with the following benefits: wall-mountable, small footprint, easily installed with NTI's pre-configured piping kit, and a lower installed cost than a boiler and a tank.

**Less On-Off Cycling** – High-Output Combi System eliminates on-off cycling of the boiler for short hot water demands.

**Eliminates Hot Water Delays** – Storage tank provides easy access to hot water recirculation if desired.

**6 Sizes Available** – The System may be customized to meet the exact needs of any application and features 6 options of boiler sizes and models to pair with the S20W indirect water heater.

## AN NTI HIGH-OUTPUT COMBI SYSTEM IS AS EASY AS 1...2...3

Choose NTI's S20W  
high-performance  
wall mounted indirect  
water heater

1



2

Pair it with the NTI boiler  
that's right for your needs.  
Choose one of NTI's  
6 heat-only boilers

3

Tie them all together with  
NTI's made-to-measure  
PLUS Kit

# VERSATILE

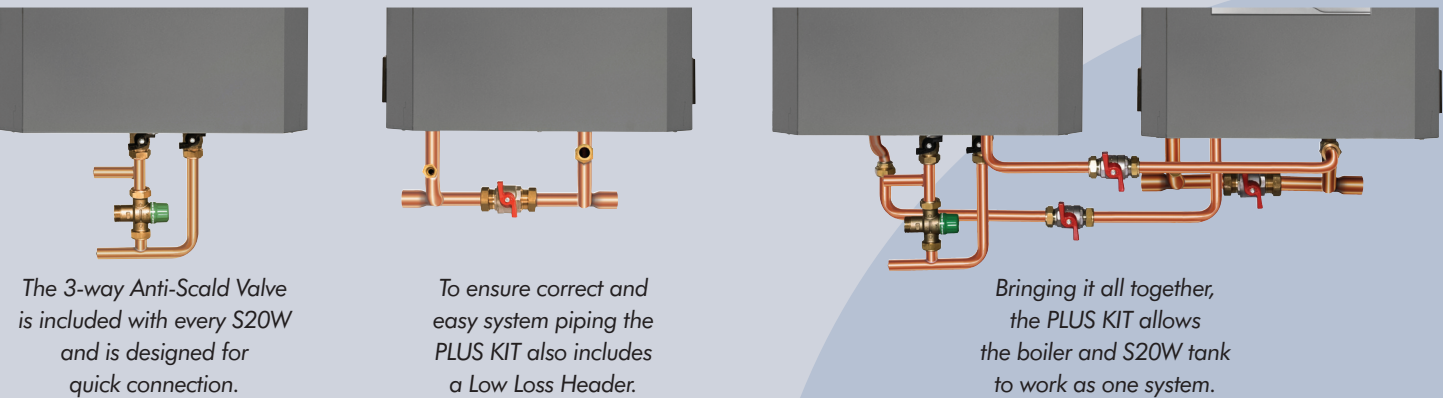
This system gives contractors the versatility to match the S20W high-output tank to the right boiler based on the heat and DHW load requirements.

It is designed to work with multiple sizes of NTI FTVN and TRX heat-only boilers:

- FTVN 85, 110, 150 and 199 and the TRX 150 and 199 heat-only
- The PLUS KIT (P/N 87261) allows for the S20W tank to be easily piped on the right or left of the boiler
- Both water-tube and fire-tube technologies

# EASY TO INSTALL

- Pre-configured, plug-and-play piping included for easy installation
- The PLUS KIT also includes a Low Loss Header to ensure correct and easy system piping
- For safety, a 3-way anti-scald mixing valve is included in all S20W tanks



PLUS KIT with Tank Boiler Piping and Low Loss Header – Part Number: 87261  
Low Loss Header Only – Part Number: 87262

# PEAK PERFORMANCE

When matched with the FTVN or TRX the S20W delivers peak performance.

| NTI BOILER<br>MODEL                           | 1st HR. RATING<br>(U.S. GPH) |       | CONTINUOUS RATING<br>(U.S. GPH) |       |
|---|------------------------------|-------|---------------------------------|-------|
|   | 140°F                        | 115°F | 140°F                           | 115°F |
| FTVN085                                       | 119                          | 158   | 102                             | 141   |
| FTVN110                                       | 149                          | 200   | 132                             | 182   |
| FTVN150                                       | 197                          | 266   | 180                             | 249   |
| FTVN199                                       | 229                          | 348   | 212                             | 330   |
| TRX150  | 197                          | 266   | 180                             | 249   |
| TRX199  | 215                          | 345   | 198                             | 328   |
| Performance values are with 50°F inlet water. |                              |       |                                 |       |



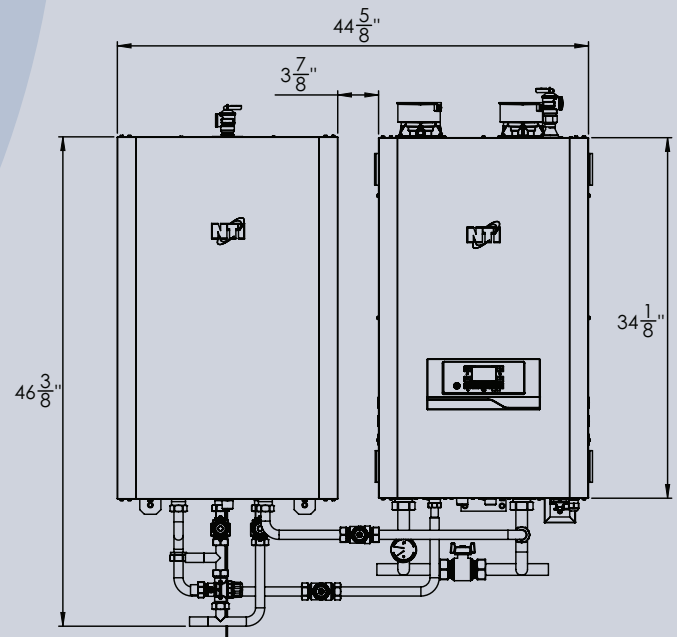
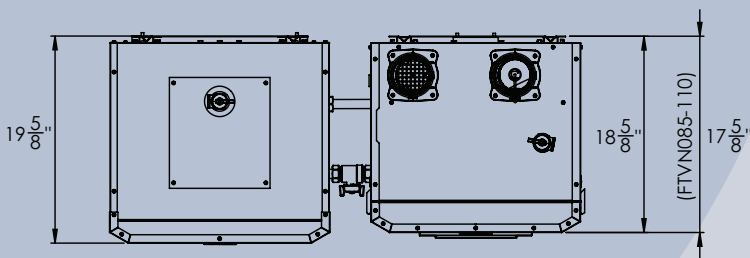
# HIGH-PERFORMANCE STAINLESS TANK

Fully pickled and passivated, the 444 Stainless Steel tank and coil come in a wall-mounted package complete with a metal jacket to complement the quality look and feel of the NTI boiler line.

The extra-large coil provides for large heat recovery rates, and the opportunity to run lower boiler temperatures for increased efficiency. Plus, our coil capacity is unmatched in the industry, and even outperforms industry standard 40-, 50- and 65-gallon indirect tanks.



## DIMENSIONS



## DEPENDABLE BY DESIGN

At NTI we strive to continuously design and manufacture boilers and water heaters that are the perfect pairing of beauty and performance. Our products meet the highest industry standards, and our in-factory Quality Control tests are the most rigorous in the industry. Every boiler and water heater are factory live-fire tested and calibrated for optimal performance. Our limited lifetime warranty provides you with the assurance of years of worry-free operation and our Technical Support is second-to-none.

## DISTRIBUTED BY:



NTI Boilers Inc.  
30 Stonegate Drive, Saint John  
New Brunswick E2H 0A4 Canada  
Tel: 506-657-6000  
Toll-free: 800-688-2575  
Fax: 506-432-1135

[ntiboilers.com](http://ntiboilers.com)